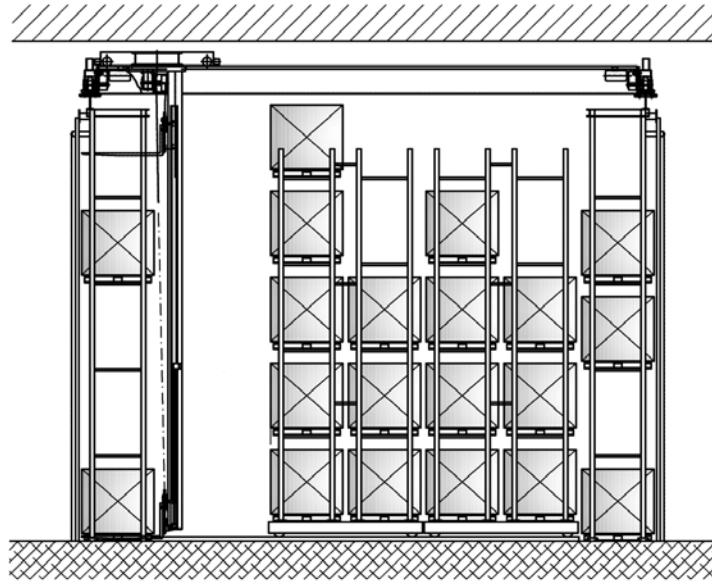


Turnkey system solutions
Maximum capacity in minimum space

M
LOG

MCOMPACT



The turnkey **MCOMPACT** modular pallet storage system is characterised by a small footprint that requires roughly 40% less floor area than a conventional fork-lift-truck operation. It is suitable for small and medium storage volumes and can be integrated into existing buildings – even operating under challenging environmental conditions such as those required in the storage of hazardous substances or frozen foodstuffs.

The **MCOMPACT** is a standardised compact storage system which may be expanded in a modular fashion. The basic version has a fully-automated storage and retrieval machine, a mobile racking system and a complete control system with integral stock management. The standard module (specification included below) has a length of 37 metres, a width

of 13 metres and a height of 9 metres and can accommodate about 1,260 Euro pallets. The number of rack locations, the racking dimensions and the floor area can be individually configured, whilst the storage locations and load handling devices can be adapted to suit the load carriers.

The storage and retrieval machine moves up to 50 pallets per hour and can access each storage location directly without any transfers. The loads are delivered for collection by manual lift trucks or via additional conveying equipment.

The **MCOMPACT**'s warehouse management system can be simply integrated with the client's ERP environment and is configurable for connection to any standard host system.

Carrying capacity

max. 1,000 kg

Length x width

37.2 m x 13.5 m

Construction height

max. 12 m

Storage capacity

approx. 1,260 pallets/stillages

Throughput capacity

up to 50 pallets/h

Load handling device

Forks

Long travel speed

up to 80 m/min

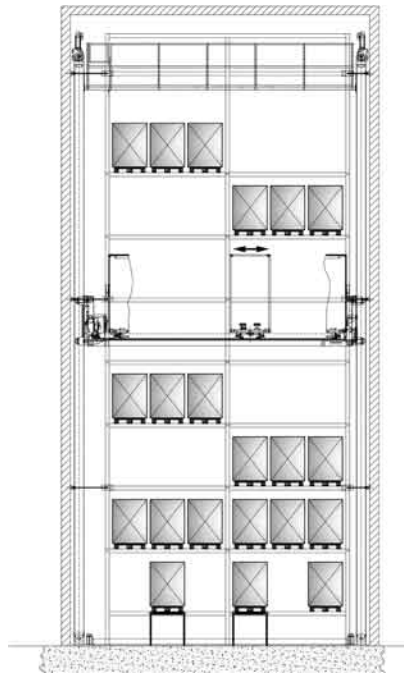
Cross travel speed

up to 30 m/min

Lifting speed

up to 45 m/min

MTOWER



The **MTOWER** pallet store with its integral transfer beam is as rapid as it is efficient. The dynamic design of the system enables throughput improvements of up to 20% when compared with the traditional storage and retrieval machine concept. The principle is based on a shuttle car mounted on a vertically guided transfer beam which provides a particularly high level of flexibility, whilst the system can also be operated in challenging environments such as those required under clean room conditions, for example. The module can be equipped with telescopic forks suitable for either single- or double-deep storage, and the load handling capacity can also be specifically configured. Typically, the standard module has a throughput capacity in the order of 50 double cycles per hour (specification included below).

The **MTOWER** is equipped as standard with a storage and retrieval machine and racking arrangement inclusive of controls and warehouse management system. It is particularly suitable for small footprints and for storage capacities of up to 500 pallet locations within geometries which are typically up to 25 metres high and 12 metres wide. The **MTOWER** therefore offers an economical option for compact, yet high storage without compromising on reliability and performance.

The **MTOWER** is compatible with all standard host systems and software standards and has up-to-date interfaces which allow integration with virtually all ERP environments.

Carrying capacity

max. 1,000 kg

Length x width

12.0 m x 7.5 m

Construction height

max. 25 m

Storage capacity

up to 500 pallets/stillages

Throughput capacity

up to 50 double cycles/h

Load handling device

Telescopic fork, single or double deep

Horizontal speed

up to 180 m/min

Vertical speed

up to 60 m/min



HEAD OFFICE

MLOG Logistics GmbH
Wilhelm-Maybach-Strasse 2
74196 Neuenstadt, Germany
P.O. Box 11 55
74194 Neuenstadt, Germany
phone +49 (0) 7131.136-0
fax +49 (0) 7131.136-210

INTERNATIONAL

Belgium · Huizingen
England · Rugby
Italy · Milan
Russia · Moscow
Austria · Salzburg
Hungary · Budapest